



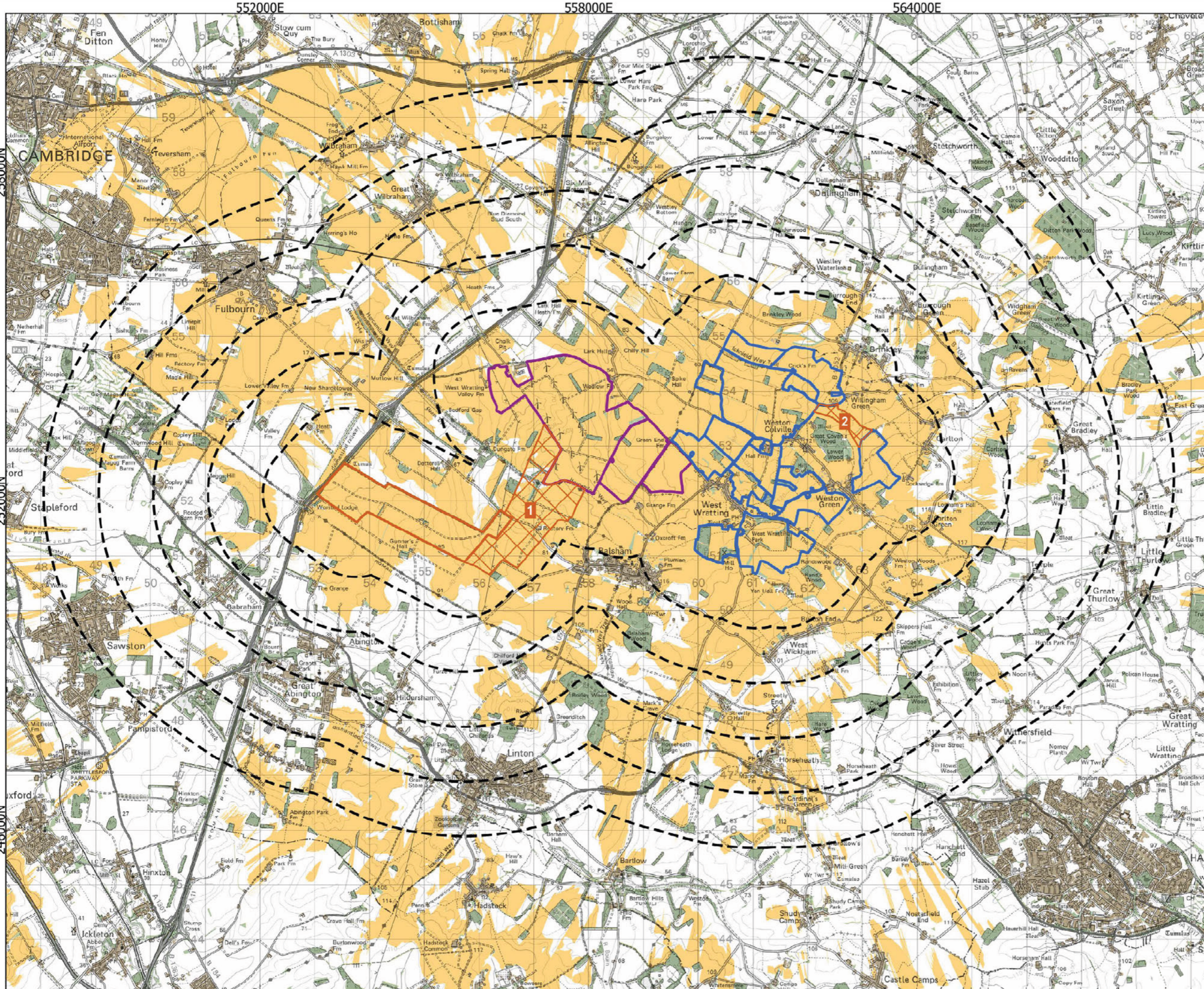
Kingsway Solar Farm

EIA Scoping Report

Appendices – Part 3

December 2024

APPENDIX H: LANDSCAPE AND VISUAL AMENITY FIGURES



Legend

- Area A - West
- Area B - Central
- Area C - East
- Distance Radii from PV Area (1, 2, 3, 4, 5km)
- Inter Array Connection Corridors
- Existing Buildings
- Existing Woodland
- Zone of Theoretical Visibility (3.5m to tops of panels)
- Panels may be visible

FIGURE DATA:
 This figure has been based on the following data:
 Layout file: D003-Obvs-panels-3.5m-LIDAR5m-5km.shp
 Terrain data: DEFRA-LDAR-AssumedHeights-DSM 2022 5m.asc
 Viewer's eye height: 2m above ground level
 Calculation grid size: 5m

NOTES:
 This drawing is based upon computer generated Zone of Theoretical Visibility (ZTV) studies produced using the Viewshed routine in the Visibility Analysis plugin for QGIS. The areas shown are the maximum theoretical visibility, taking into account topography, principal woodlands and buildings.
 A digital surface model (DSM) has been derived from DEFRA National LIDAR Programme DTM height data with the locations of woodland and buildings taken from the OS Open Map Local dataset. Buildings have been modelled with an assumed height of 7.5m and woodland an assumed height of 15m, representing a conservative estimate of average heights within the study area.
 The model does not take into account some localised features such as small copses, hedgerows or individual trees and therefore still gives an exaggerated impression of the extent of visibility. The actual extent of visibility on the ground will be less than that suggested by this plan. The ZTV includes an adjustment that allows for Earth's curvature and light refraction. It is based on a derived DSM and has a 5m² resolution.
 CRS: EPSG:27700
 Projection: Transverse Mercator
 Ellipsoid: EPSG:7001
 Units: meters



| Rev | Date | Description | Drn | Chk | App |
|-----|----------|-----------------|-----|-----|-----|
| 01 | 05/12/24 | Symbols Rev sed | MP | JGa | AT |
| 00 | 07/11/24 | First Draft | AMW | JGa | AT |

663900 - Kingsway Solar Farm

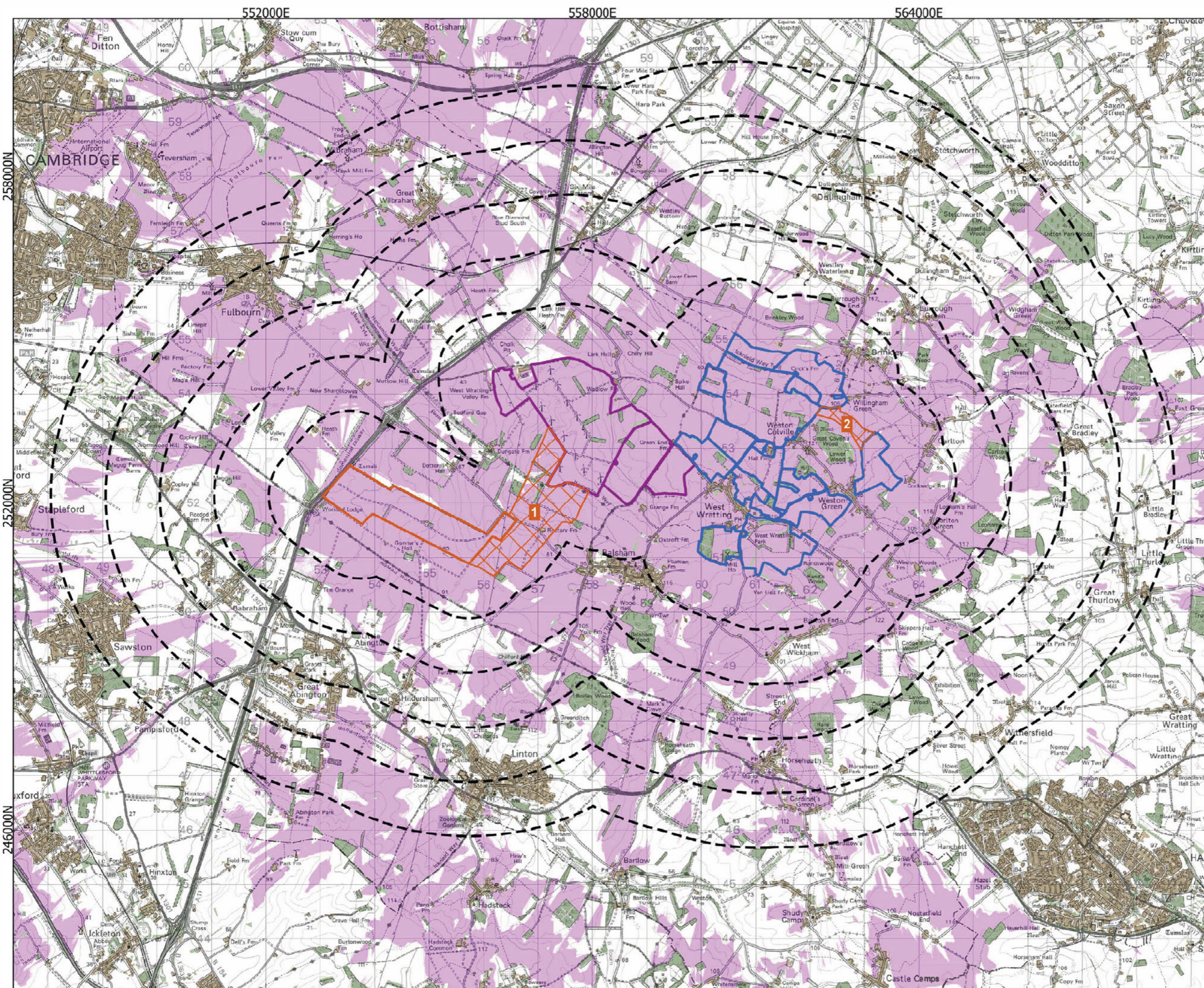


TITLE: Figure H.1:
 LVIA Scoping ZTV of the Solar
 Photovoltaics

ID:H.1 - Screening ZTV

0 1 2
 Kilometers
 Scale: 1:65000 @A3

REV 00



Legend

- Area A - West
- Area B - Central
- Area C - East
- Distance Radii from PV Area (1, 2, 3, 4, 5km)
- Inter Array Connection Corridors
- Existing Buildings
- Existing Woodland

Zone of Theoretical Visibility (15m high substation)

- Substation may be visible

FIGURE DATA:
 This figure has been based on the following data:
 Layout file: D003-Obvs-substation-3 5m-LIDAR5m-5km.shp
 Terrain data: DEFRA-LDAR-AssumedHeights-DSM 2022 5m.asc
 Viewer's eye height: 2m above ground level
 Calculation grid size: 5m

NOTES:
 This drawing is based upon computer generated Zone of Theoretical Visibility (ZTV) studies produced using the Viewshed routine in the Visibility Analysis plugin for QGIS. The areas shown are the maximum theoretical visibility, taking into account topography, principal woodlands and buildings.
 A digital surface model (DSM) has been derived from DEFRA National LIDAR Programme DTM height data with the locations of woodland and buildings taken from the OS Open Map Local dataset. Buildings have been modelled with an assumed height of 7.5m and woodland an assumed height of 15m, representing a conservative estimate of average heights within the study area.
 The model does not take into account some localised features such as small copses, hedgerows or individual trees and therefore still gives an exaggerated impression of the extent of visibility. The actual extent of visibility on the ground will be less than that suggested by this plan. The ZTV includes an adjustment that allows for Earth's curvature and light refraction. It is based on a derived DSM and has a 5m² resolution.
 CRS: EPSG:27700
 Projection: Transverse Mercator
 Ellipsoid: EPSG:7001
 Units: meters



| Rev | Date | Description | Drn | Chk | App |
|-----|----------|-----------------|-----|-----|-----|
| 01 | 05/12/24 | Symbols Revised | MP | JGa | AT |
| 00 | 07/11/24 | First Draft | AMW | JGa | AT |

663900 - Kingsway Solar Farm



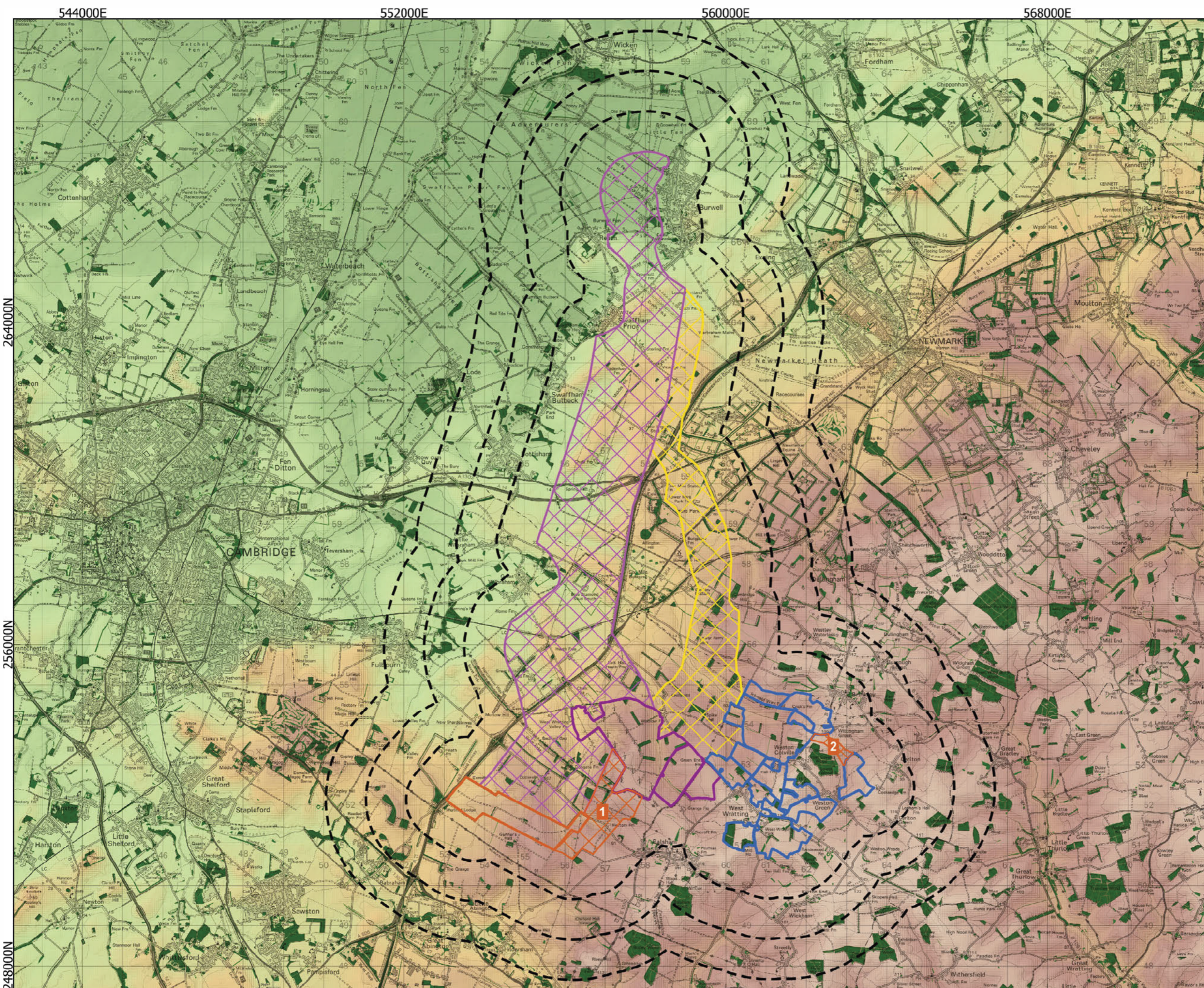
TITLE: Figure H.2:
 LVIA Scoping ZTV of the Substation

ID: H.2 - Substation Screening ZTV

0 1 2
 Kilometers
 Scale: 1:65000 @A3

REV 00

Attribution: Contains Ordnance Survey data © Crown copyright and database right 2024 | © Environment Agency copyright and/or database right 2022. All rights reserved. Buildings and/or woodland - Contains public sector information licensed under the Open Government Licence v3.0



Legend

- Area A - West
- Area B - Central
- Area C - East
- Inter Array Connection Corridors
- Grid Connection Corridor - West
- Grid Connection Corridor - East
- Distance Radii from PV Area and Grid Connection Corridor (1, 2, 3km)
- Woodland

Elevation (AOD)

140m

0m

CRS: EPSG:27700
 Projection: Transverse Mercator
 Ellipsoid: EPSG:7001
 Units: meters



| Rev | Date | Description | Drn | Chk | App |
|-----|----------|-----------------|-----|-----|-----|
| 01 | 05/12/24 | Symbols Revised | MP | JGa | AT |
| 00 | 07/11/24 | First Draft | AMW | JGa | AT |

663900 - Kingsway Solar Farm



**TITLE: Figure H.3:
 LVIA Scoping Analysis of the
 Grid Connection Corridor**

ID:H.3 - Topography

0 2 4

Kilometers

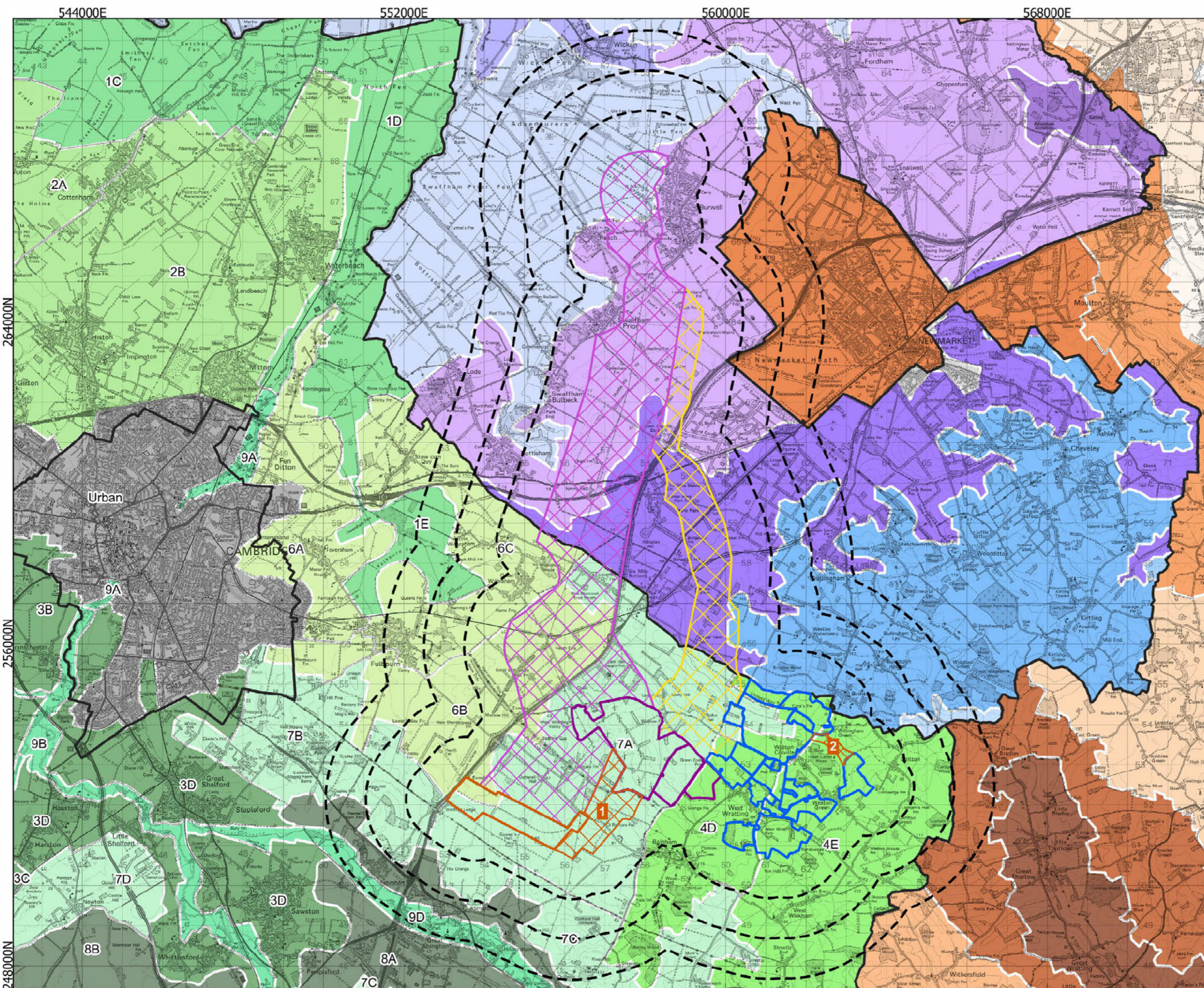
Scale: 1:88000 @A3

REV 00

544000E 552000E 560000E 568000E

264000N 256000N 248000N

Attribution: Contains Ordnance Survey data © Crown copyright and database right 2024 | © Environment Agency copyright and/or database right 2022. All rights reserved. Buildings and/or woodland - Contains public sector information licensed under the Open Government Licence v3.0



Legend

- Area A - West
- Area B - Centra
- Area C - East
- Local Authority Boundaries
- Inter Array Connect on Corridors
- Grid Connection Corridor - West
- Grid Connection Corridor - East

Greater Cambridge Landscape Character Areas (2021)

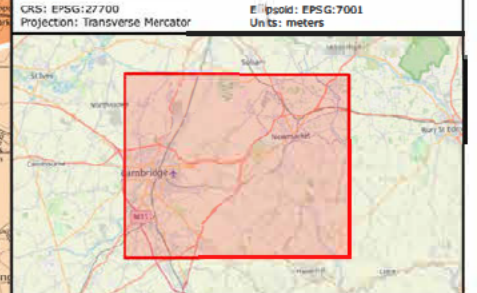
- 1C: Bare Fen to Fildwell Fen
- 1D: North Fen to M Iton Fen
- 1E: Fu bourne Fen
- 2A: Fen Edge Claylands
- 2B: Longstanton Fen Edge Claylands
- 2C: Cottenham Fen Edge Claylands
- 2D: Cottenham Fen Edge Claylands
- 2E: Lowland Farmlands
- 3A: Croxtol Lowland Farmlands
- 3B: Bourn Tributaries Lowland Farmlands
- 3C: Rhee Tributaries Lowland Farmlands
- 3D: Cam and Granta Tributaries Lowland Farmlands
- 3E: Wooded Claylands
- 4D: West Watting Wooded Claylands
- 4E: West Wickham Wooded Claylands
- 4F: The Camps Wooded Claylands
- 5A: Fen Edge Cha klands
- 6A: Fen Ditton Fen Edge Chalklands
- 6B: Wilbraham Fen Edge Chalklands
- 6C: Fu bourne Fen Edge Chalklands
- 6D: Chalk Hills
- 7A: Eastern Cha k Hills
- 7B: Gog Magog Chalk Hills
- 7C: Linton Cha k Hills
- 7D: Newton Chalk Hills
- 7E: Lowland Cha klands
- 8A: Pampisford Lowland Chalklands
- 8B: Morden to Duxford Lowland Chalklands
- 8C: River Valleys
- 9A: Cam River Valley - Cambridge
- 9B: Cam River Valley
- 9C: Rhee River Valley
- 9D: Granta River Valley

East of England Regional Character Typology (2010)

- Chalk Hills and Scarps
- Forested Estate Sandlands
- Lowland Valley Chalklands
- Lowland Valley Farmlands
- Planned Peat Fen
- Valley Settled Farmlands
- Wooded Plateau Farmlands
- Wooded Valley Farmlands
- Urban

West Suffolk Landscape Character Areas (2022)

- Barrow Chalk Hills
- Cavenham-Risby Sandlands Fringe
- Glem and Wickham-brook Farmlands
- Haverhill Farmlands
- Kennett Valley
- Newmarket and Fordham Chalklands
- Sowley Green Plateau Farmlands
- Upper Stour Valley



| Rev | Date | Description | Drn | Chk | App |
|-----|----------|-----------------|-----|-----|-----|
| 01 | 05/12/24 | Symbols Revised | MP | JGa | AT |
| 00 | 07/11/24 | First Draft | AMW | JGa | AT |

663900 - Kingsway Solar Farm

TITLE: Figure H.4: Landscape Character

ID: H.4 - Landscape Character

Scale: 1:88000 @A3

REV 00

Attribution: Contains Ordnance Survey data © Crown copyright and database right 2024